



The easiest way to control multiple computers from One keyboard, mouse and monitor



■ **KM2 : 2-port KVM Switch**



■ **KM4 : 4-port KVM Switch**

- Unique loose-free cables included.
- Keyboard and mouse emulation for error-free PC boot up.
- Hot pluggable - remove or add connected PC without turning the MyHopper off.
- Space-saving design - all cables are connected to the rear.
- Auto scan automatically selects computers sequentially.
- Supports M/S IntelliMouse (Pro), Explorer, Optical and many others.
- Select computer by hot-key or pushbutton.
- Operating system independent and transparent to all applications.
- High VGA resolution 1920x1440.
- DDC2B compatible.
- Power-free operation

The MyHopper KVM Switch Kits let you take instant control of 2 or 4 PS/2-equipped desktop or notebook PCs with the press of a button! Ready to run right out of the box, the MyHopper KVM Switch Kits allow you to access two or four computers with one keyboard, mouse, and monitor. The kits come with everything you need - a switch and complete cable sets, just hook them up and go.

Access multiple PC's from one keyboard, mouse and monitor



The MyHopper KMH2 and KMH4 are computer switches that allow access to two or four IBM compatible computers respectively from one PS/2 keyboard, mouse and monitor. Switching between computers is as easy as pressing the pushbutton or entering hot-key commands from your keyboard. There is no interface card and software to install and the MyHopper is independent of the computer operating system.

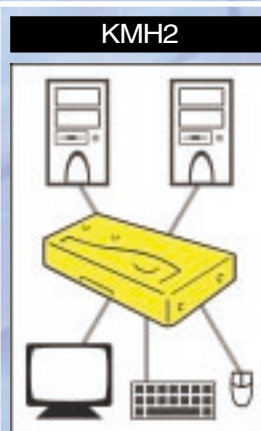
Ready to run right out of the box, these Kits come with everything you need - a switch and complete cable sets, just hook them up and go. By allowing one console to manage all your computers, the MyHopper eliminates the expense for extra consoles, the spaces for extra peripherals and the time hopping around for accessing different computers.

When you screw one 3-in-1 cable to the MyHopper, you in fact lock all keyboard, mouse and VGA signals of one computer into position for loose-free connection. Now, enjoy navigating from one computer to the other with these reliable MyHopper KVM switches!

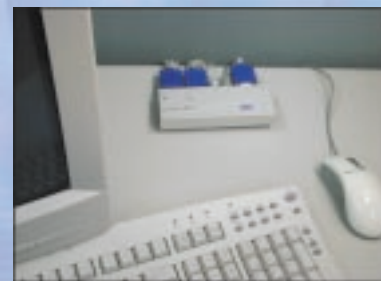
Specification	KMH2	KMH4
Console port number		1
Computer port number	2	4
Port selection push button		1
Hot plug-and-play		yes
Hot-key control		yes
VGA	1920 x 144, DDC2B	
Y2K compliance		yes
Computer connector	HDB15 x 2	HDB15 x 4
Console connector		
Keyboard	PS/2	
Mouse	PS/2	
Monitor	HDB15	
Automatic scan interval	3,8,15,30 seconds	
Cable length	1.2m(4ft) x 1 1.8m(6ft) x 1	1.2m(4ft) x 2 1.8m(6ft) x 2
H x W x D (mm)	20 x 70 x 155	20 x 85 x 180
Power-free operation	yes	



Unique cable design packs keyboard/mouse/VGA signals into one locked connector for loose-free connection.



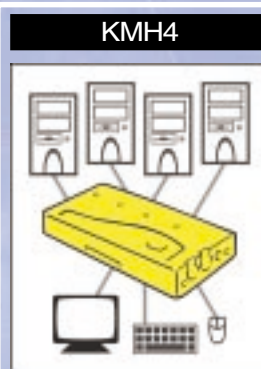
KMH2 connection



With all cables at the rear side, the complete setup takes insignificant desktop space.



KMH2 contains : 3-in-1 cables x2
2-port switch x1



KMH4 connection



With all thick cables at the rear side, the complete setup takes insignificant desktop space.



KMH4 contains : 3-in-1 cables x4
4-port switch x1



Rextron Technology, Inc.

Sales office

TEL:886-2-2561-6819

FAX:886-2-2561-6820

9F, No.72, Sung Jiang Rd., Taipei, Taiwan, ROC, 104

info@rextron.com

www.rextron.com

Specifications are subject to change without further notice.

Rextron is a registered trademark of Rextron Technology Inc., U.S.A..

All other (registered) trademarks are the property of their respective owner.

Copyright Rextron Technology, Inc., 2002.